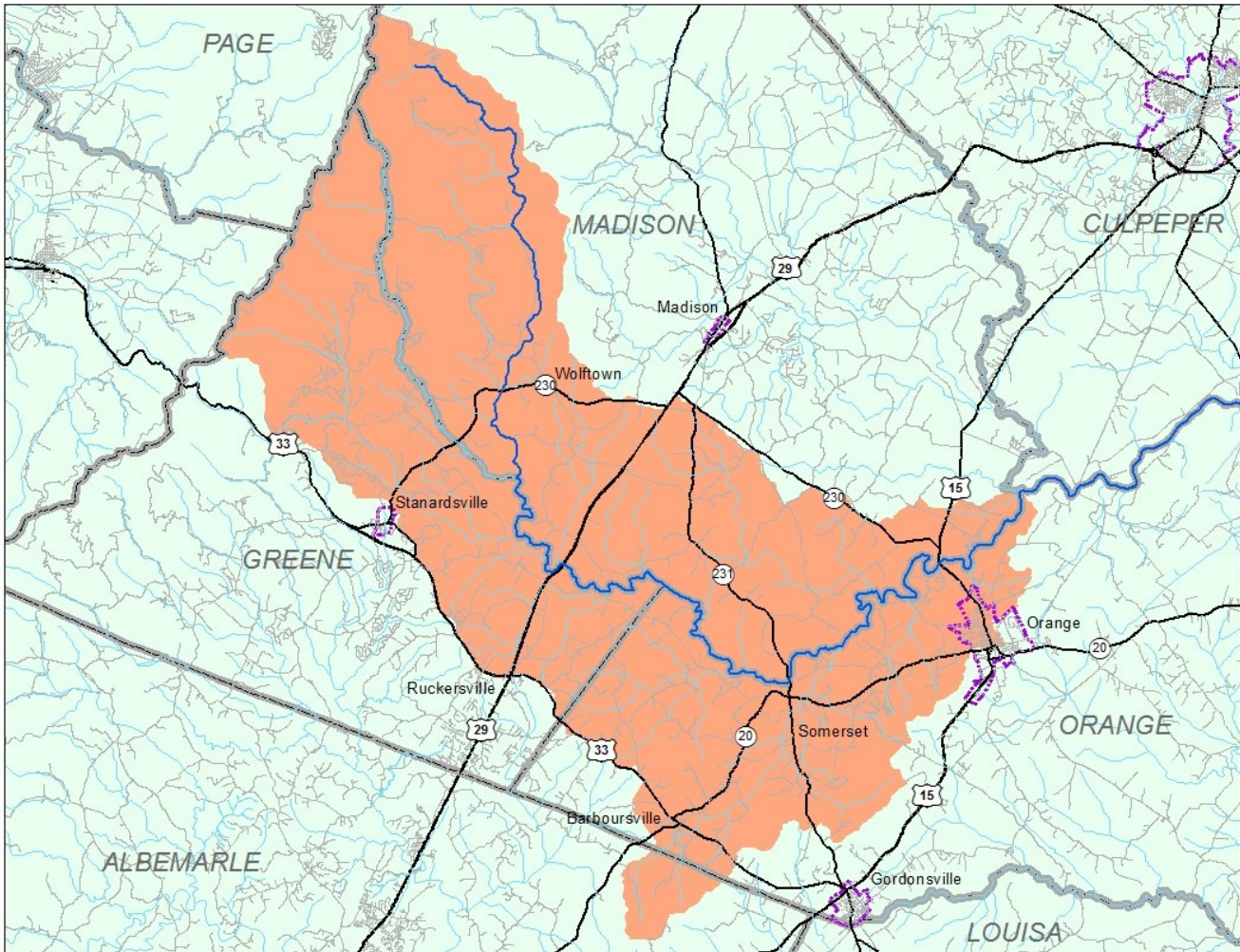


The Upper Rapidan River Watershed



**IMPROVED
GRAZING
CLEANER
WATER:**

**TMDL FINANCIAL
ASSISTANCE TO
IMPROVE YOUR
GRAZING
SYSTEM
WITH STREAM
EXCLUSION
PRACTICES**



What is a TMDL?

Many streams and rivers in the Culpeper District and elsewhere in Virginia are considered impaired waters by Virginia Department of Environmental Quality since these rivers have been found to have above normal levels of E. coli bacteria. Locally, these rivers include Garth Run, Rippin Run, Marsh Run, Blue Run, Poplar Run, Beautiful Run and two sections of the Rapidan River, among others. When water bodies are officially listed as impaired, it is required that a plan is developed to reduce most of the inputs of that pollutant to the stream. This plan is called a Total Maximum Daily Load or TMDL. It is essentially a recipe to clean up the stream of that particular pollutant.

Virginia Department of Environmental Quality (DEQ) allocated funding to Culpeper Soil & Water Conservation District to administer technical guidance and on-farm project funding to help farmers voluntarily exclude livestock from streams in these impaired watersheds. These projects include stream exclusion and cross fencing and installing or developing clean reliable water alternatives such as springs and wells. Our goal is to improve water quality while helping farmers improve their livestock operations and implement working rotational grazing systems.

What are the Benefits to my Operation?

- Cleaner water for your livestock watering needs
- Healthier livestock
- Lower veterinary costs
- A better grazing system
- Improved pasture utilization
- Quicker pasture recovery
- Less compaction of soils

Funding Available

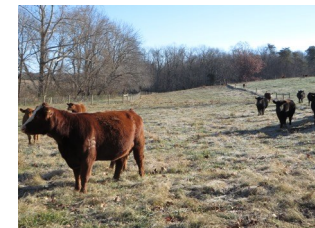
- **Project funding:** TMDL areas are eligible for cost share rates varying between 65-100% based on the District total estimated cost of a grazing system.
- **Tax Credits:** Producers may be eligible for a tax credit which is based on your out-of-pocket expense after cost-share has been calculated.

Program Flexibility: The fencing program allows for ***four options***: 10', 25', 35' and 50' setbacks/buffers for stream exclusion fence. **Cost share rates range from 65% to 100%** depending on buffer width and contract length.

In addition, the buffer acres excluded from livestock receive ***rent payments of \$80 per acre per year*** (35 foot or greater buffer only), all paid up front for the life of the contract.

Technical Guidance

- **Field visits to review operation:** A Conservation Specialist will come to the farm to observe the current grazing operation and get producer input and goals.
- **Recommendations:** A Conservation Specialist will work with you to design a grazing system and suggest ways to improve your existing grazing system.
- **Design and layout:** A Conservation Specialist will work with you to layout the grazing system and design the watering system including pipeline size and calculating the gallons of water needed daily to water cattle.
- **Construction Inspections to insure proper installation:** A Conservation Specialist routinely inspects projects to verify installation procedures and answer questions.
- **Flexibility:** It is not always feasible to invest in a complete grazing system at one time. The District has the flexibility in many cases to work with producers to plan projects to be installed in phases over several years if needed.



**FOR MORE INFORMATION
CONTACT**

Amanda McCullen 540-825-8591
amandac@culpeperswcd.org

Spencer Yager 540-308-6301
spencery@culpeperswcd.org



This cooperative project has been funded wholly or in part by EPA through a Section 319(h) grant from the United States Environmental Protection Agency through grant agreement number # 16678