

1



2



3



4



5



6

EQIP – Livestock Practices

Prescribed Grazing

Forage and Biomass Planting
(endophyte free fescue, native warm season, cool season legume mix)

Herbaceous Weed Control

Nutrient Management

7

EQIP – Livestock Engineering

Exclusion Fencing for Streams and Woods

Water System Installation

Stream Crossings

Waste Management Facilities
(winter feeding, loading lot, bedded pack)

Interior Fencing for Rotational Grazing

8

Example of a complicated livestock plan:

- Bed Pack Facility
- Exclusion and Confinement Fencing
- Water System
- Heavy Use Areas
- Loading Lot System
- Stream Crossing
- Tree Planting
- Prescribed Grazing
- Weed Control
- Nutrient Management
- Access Control

Livestock projects can be simple tool Take it one step at a time.

9



10



11



12

Interior Fencing & Water System



13

Water System



14

Stream Crossing – Culvert



15

Stream Crossing – Ramp Style



16

EQIP – Cropland



Residue and Tillage Management (No Till and Reduced Till)



Cover Crops



Grassed Waterways



Nutrient Management



Field Borders (Wildlife and pollinator habitat)



Conversion to Pasture

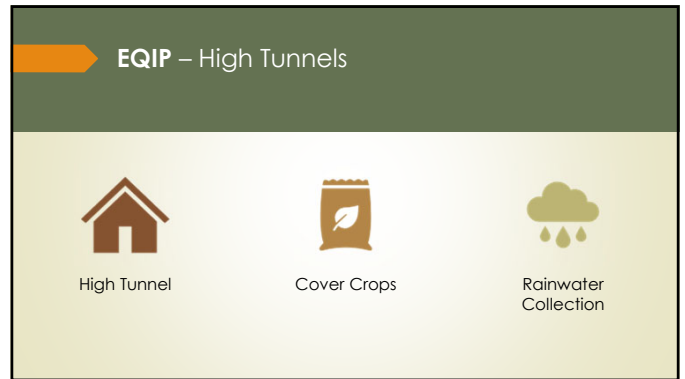


18

17



19



20



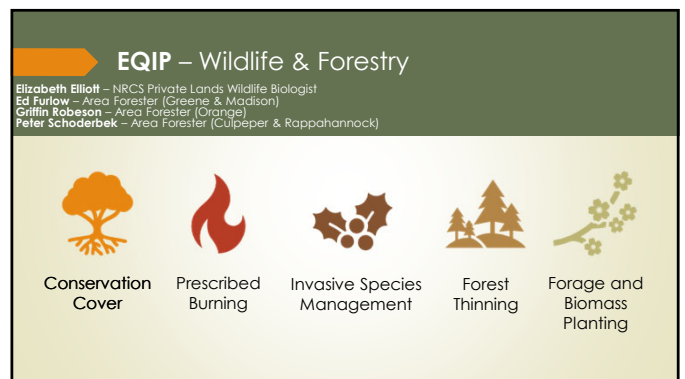
21



22



23



24



25



26



27



28

Working Lands for Wildlife

Northern Bobwhite Quail

Anyone with grazing land is eligible to participate

Promote wildlife habitat without sacrificing grazing acreage

Turn cool season pastures into native warm season grasses

- Switchgrass
- Indiangrass
- Big Bluestem
- Little Bluestem Mix
- Broomsedge



29



30

CSP - Conservation Stewardship Program

For producers already using conservation practices but want to go above and beyond!

- Better weight gain on cattle by improving pasture quality
- Provide more intense Prescribed Grazing Plan for better rotation of cattle
- Increase crop yields by furthering no-till operations, better cover crop selection and precision nutrient management
- Manage forest areas and/or convert new areas for better wildlife habitat



31

Easements

Voluntary programs to preserve land for agricultural and forestland uses



ALE

Agricultural Land Easements



WRE

Wetland Reserve Easements

Limits future development and subdivision
Protects landowner use for management and recreation
Agreement through **Virginia Outdoors Foundation** and **Piedmont Environmental Council**

32

Other
Assistance
Programs

FSA

CRP
Conservation Reserve
Program

CREP
Conservation Reserve
Enhancement Program

33

Application Process



Turn in your application



We will assess your project through the National Office Screening Tool



Project will be ranked against other applications in the same funding pool



Contract is obligated if selected for funding and contract signed

34

Getting Approved

Once selected for funding, the conservation plan is written into a contract

Producer signs contract, making a commitment to implement the plan

Funds are obligated and assigned to that producer for that project

Producer can start building/implementing the project



35

Contact Information

Rex Rexrode

District Conservationist

- 540-317-7724
- Rexrexrode@usda.gov

Isabella Brush

Soil Conservationist

- 540-317-7725
- Isabella.brush@usda.gov

James Ingram

Soil Conservationist

- 540-317-7728
- James.ingram@usda.gov

36



37